

# LabVIEW™

Marko Dimitrijević

# Zahtev za serijski broj



labview student edition download



Све

Слике

Видео

Вести

Мапе

Још

Подешавања

Алатке

Око 730.000 резултата (0,30 секунде/и)

## How to Install NI LabVIEW Student Edition - National Instruments

[www.ni.com](http://www.ni.com) > Tutorials ▾ Преведи ову страницу

03.12.2018. - This requires the LabVIEW Student Edition DVD or that you have downloaded LabVIEW. Click here to [download LabVIEW Student Edition](#).

## Why NI LabVIEW for Students – National Instruments

[www.ni.com/labviewse/](http://www.ni.com/labviewse/) ▾ Преведи ову страницу

LabVIEW is the only graphical programming environment where you can program the way you think, connect to ... Free LabVIEW Student Edition for 6 months.

[Free 6-Month Evaluation of ...](#) · [Get Started With NI LabVIEW ...](#)

## Where do I Download LabVIEW Student Edition? - National Instruments

<https://knowledge.ni.com/KnowledgeArticleDetails?id...> ▾ Преведи ову страницу

18.01.2019. - I have recently purchased LabVIEW student edition and I would like to [download/](#) activate it on my computer. I have searched online but I cannot ...

## Free 6-Month Evaluation of LabVIEW Student Edition for at-home ...

<https://forums.ni.com/.../Free...LabVIEW-Student-Edition.../3...> ▾ Преведи ову страницу

12.08.2013. - 11 постова

NI LabVIEW Student Edition is equivalent to the full version of ... You must have an NI User Profile and be logged-in to access the [download](#).

Solved: [LabVIEW Student Version](#) trail 6 months 16. мар 2018.

Re: [Get Your Free 6-Month License of NI LabVIEW Student ...](#) 29. јун 2017.

[Get NI LabVIEW Student Edition](#) for free 21. јан 2015.

[Get Your Free 6-Month License of NI LabVIEW Student Edition ...](#) 4. јун 2013.

Више резултата од [forums.ni.com](http://forums.ni.com)

# Zahtev za serijski broj

## NI LabVIEW Student Edition



NI LabVIEW Student Edition is equivalent to the full version c

Through the graphical programming environment, you can qu  
disk, and display the data to a graph or table using the nume

This license includes:

- LabVIEW Student Edition, LabVIEW MathScript RT Module

\*This license works on Windows OS only

### Legal Acknowledgment:

This software license is for students. By selecting "I Agree", you understand that you  
personal education purposes, and not for any commercial, instructional, for-credit co  
[Agreement](#).

You must have an NI User Profile and be logged-in to access the download. If you ar  
profile for free.

**Note.** If you still meet the requirements stated above, you may request a subsequent

I AGREE, Request serial

# Registracija

**Create an NI User Account** (or [Log In](#))

Country  
Serbia

Email Address  
marko@elfak.ni.ac.rs

Password  
••••••

Confirm Password

First Name

Last Name

Company Name

Address

# Prijavljivanje

## Log In

Email Address

Password

[Forgot your password?](#)

Log In

**New to ni.com?**

[Create a new user account](#)  
(Takes less than a minute)

## Request a 6-Month Evaluation of LabVIEW Student Edition

Thank you for requesting a six-month evaluation of NI LabVIEW Student Edition. Your serial number for activation is:

This software license is for students. By proceeding, you represent that (i) you are a student at a high school, college, or university; (ii) you are using the software for educational purposes pursuant to the License Agreement provided with the software; and (iii) you understand that the software is for educational purposes, and not for any commercial, instructional, or research purposes.

**Serial Number: M78X98144**

### Additional Resources

- [Download Software](#)
- [Find Out How to Activate LabVIEW Student Edition](#)
- [Learn the Basics of LabVIEW Programming](#)

### Contact Us

NI technical representatives worldwide can answer your hardware and software questions, provide quotation, or provide technical support. Visit our [Contact Us](#) page or call (866) 463-3364.

If you are outside the United States or Canada, you can find your local contact information at [ni.com/contact](http://ni.com/contact).

If you experience difficulties downloading from our FTP site, please visit our [FTP Troubleshooting Page](#).


# Instalacija LabVIEW paketa



# Opcije licenciranja

LabVIEW 2013 Platform DVD

Select Installation Option



I have serial numbers for one or more products in this installer.

Select and activate products based on my serial numbers (Internet connection required).

[Privacy Statement](#)


I only want to evaluate products.

<< Back   Next >>   Cancel



# Unošenje serijskog broja

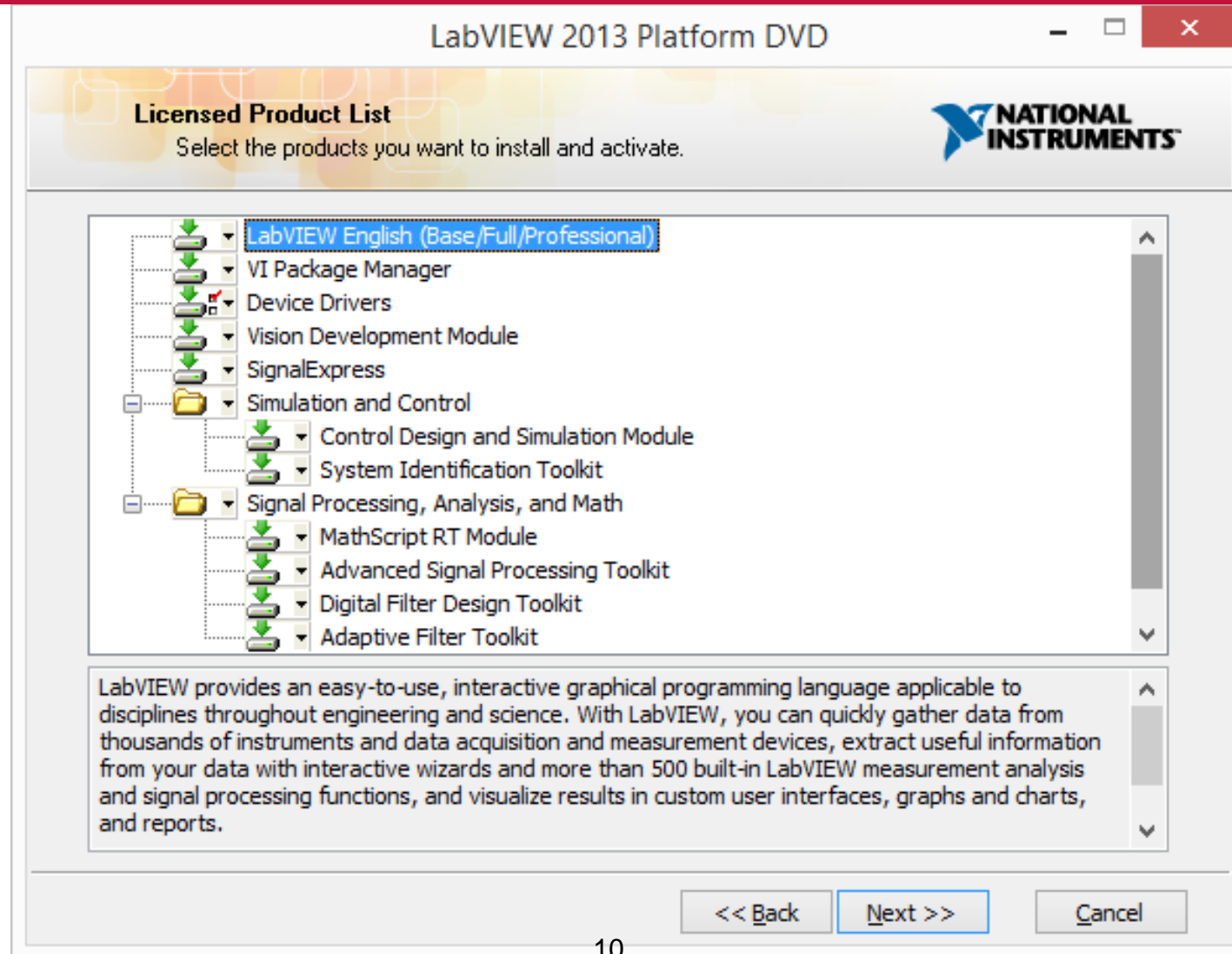
LabVIEW 2013 Platform DVD

Enter Serial Numbers 

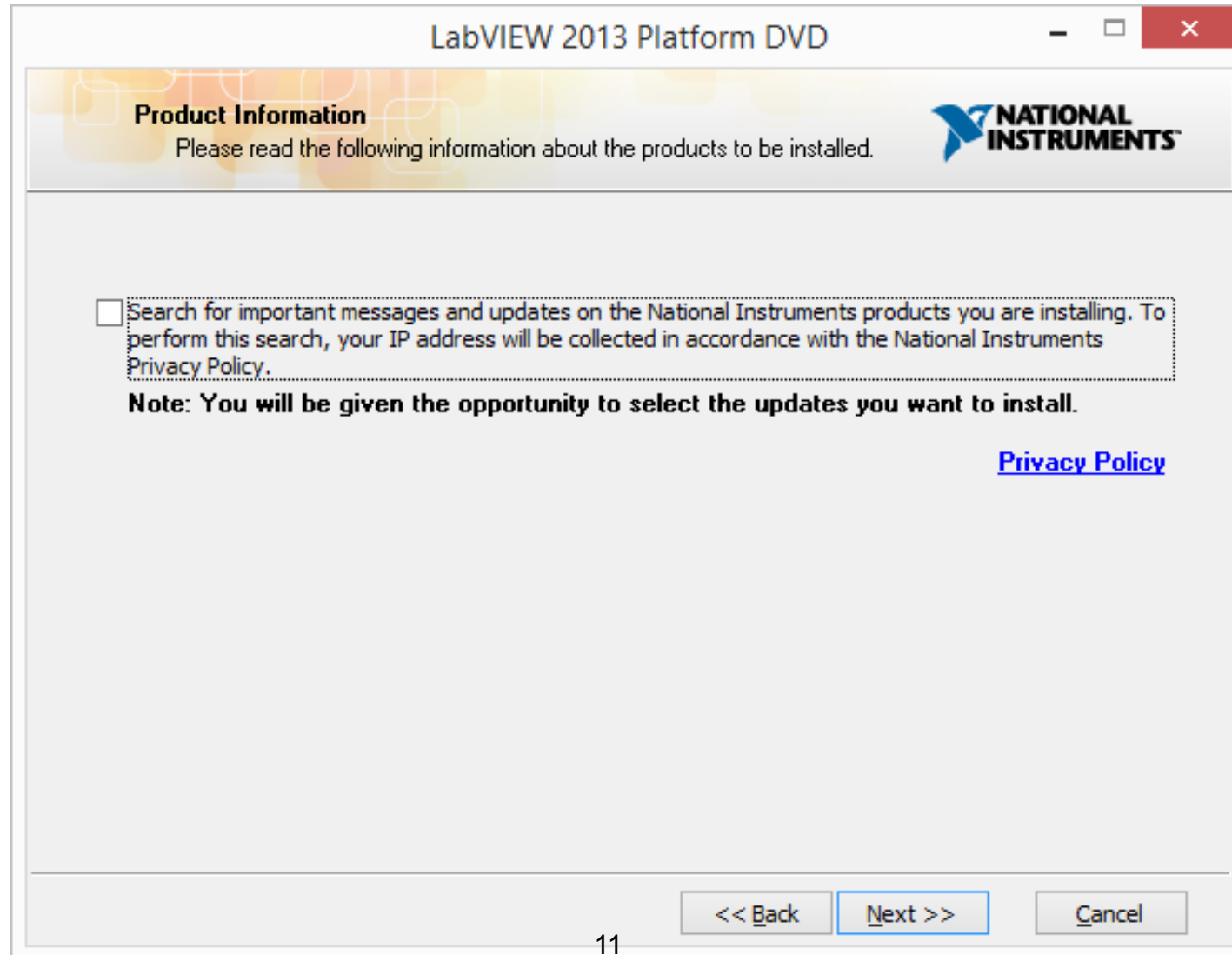
Enter all serial numbers for the products in this installer that you want to install.

| Serial Numbers | Product Names                 |
|----------------|-------------------------------|
| M78X98144      | LabVIEW Student Edition Suite |
|                |                               |
|                |                               |
|                |                               |
|                |                               |
|                |                               |
|                |                               |
|                |                               |
|                |                               |
|                |                               |

# Selekcija paketa




# Izbor dodatnih paketa



# Folder za instalaciju

LabVIEW 2013 Platform DVD

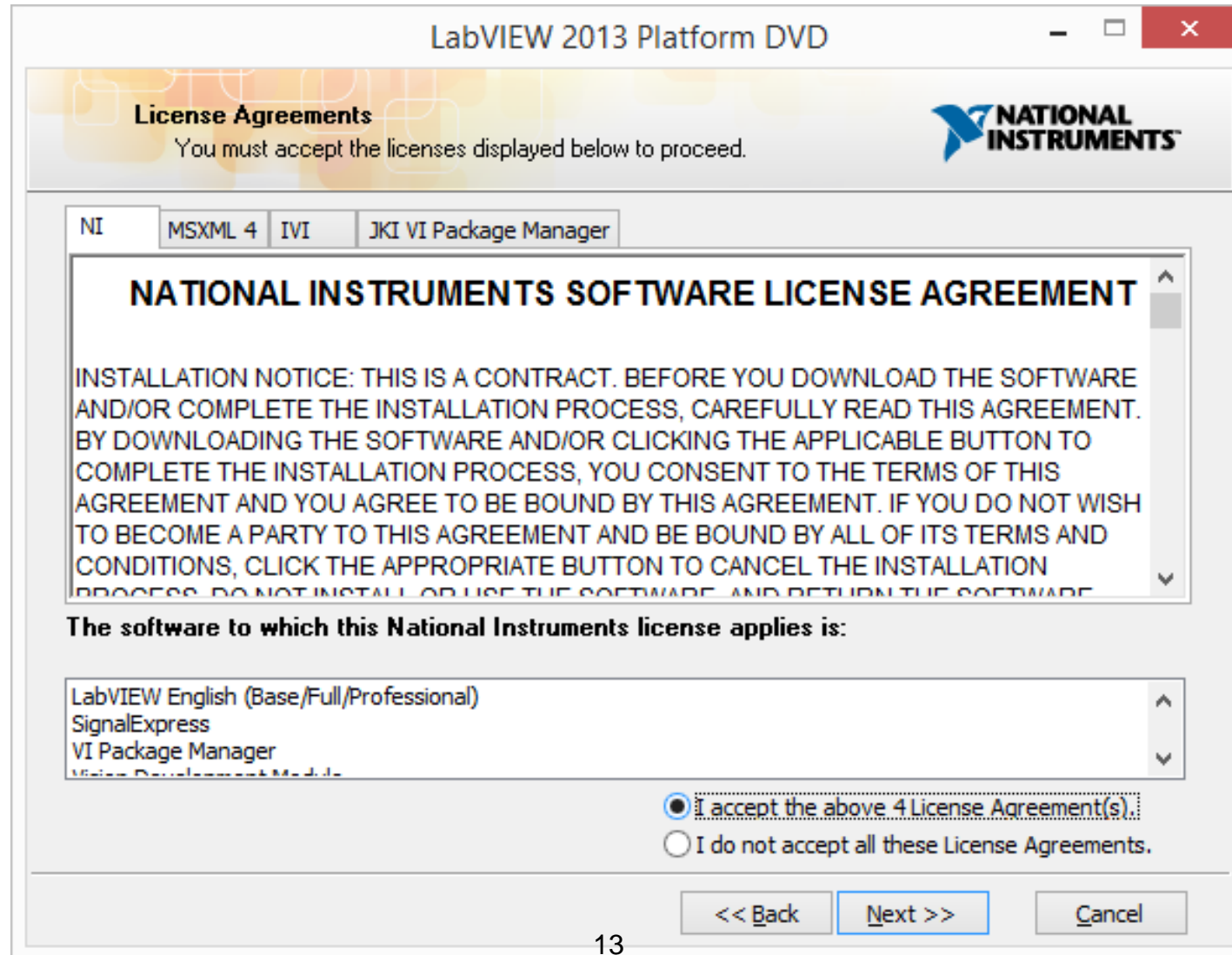
**Destination Directory**  
Select the primary installation directory.



Please choose the installation directory for National Instruments software

Please choose the installation directory for LabVIEW

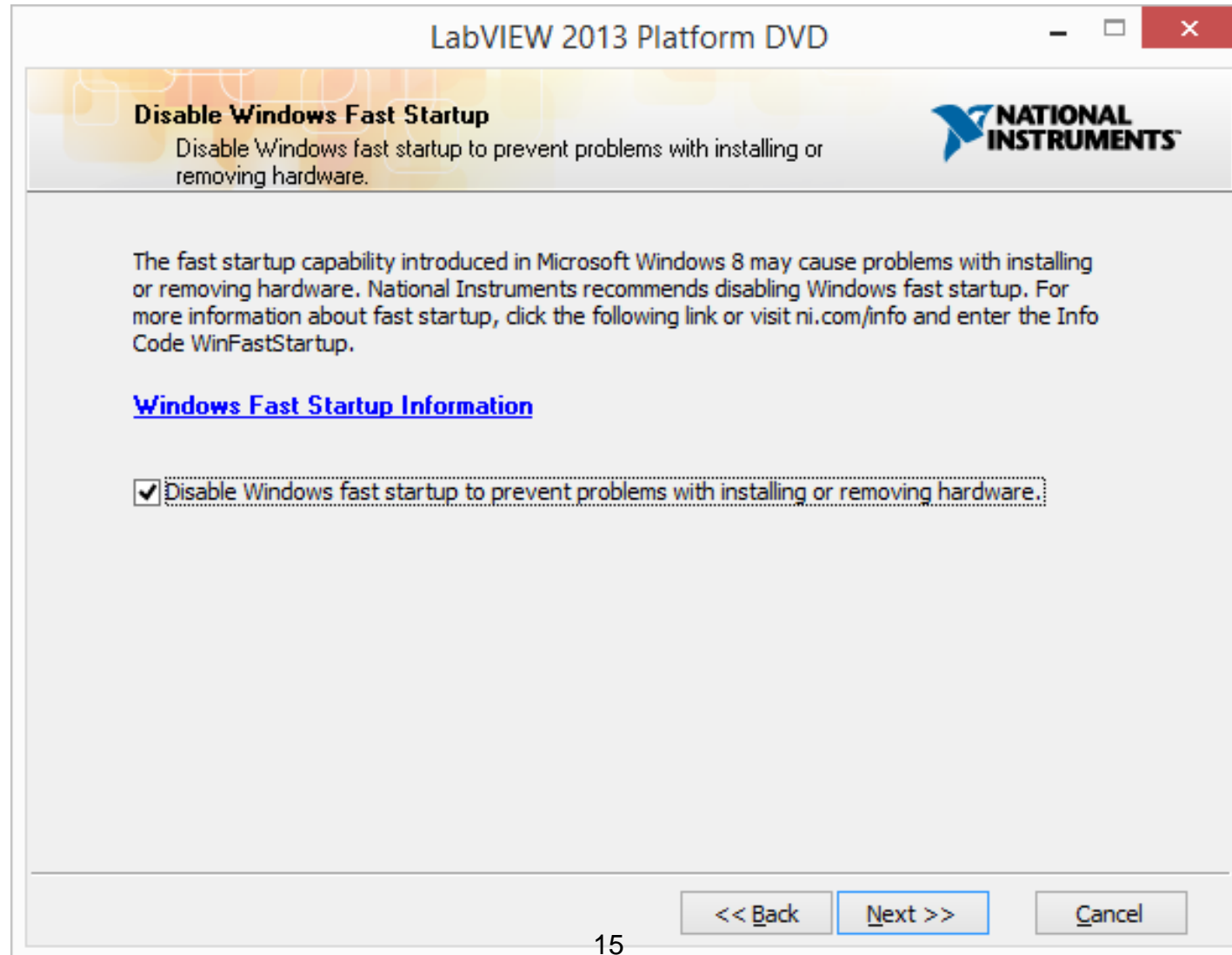
# EULA



# Instalacija drajvera




# Windows 8 Fast Startup



# Aktivacija

LabVIEW 2013 Platform DVD

**Activate Your Products**  
Complete the following information.



A National Instruments User Profile is required to activate your product. When you activate NI software using your User Profile, NI can better deliver benefits associated with software maintenance and support programs.

Log in to your User Profile

Email

Password

[Forgot your password?](#)

Create a new User Profile

I am not the end user. Defer activation until product launch

[National Instruments Software Activation Privacy Statement](#)


<< Back   Next >>   Cancel



# Aktivacija

LabVIEW 2013 Platform DVD

**Activate Your Products**  
Complete the following information.

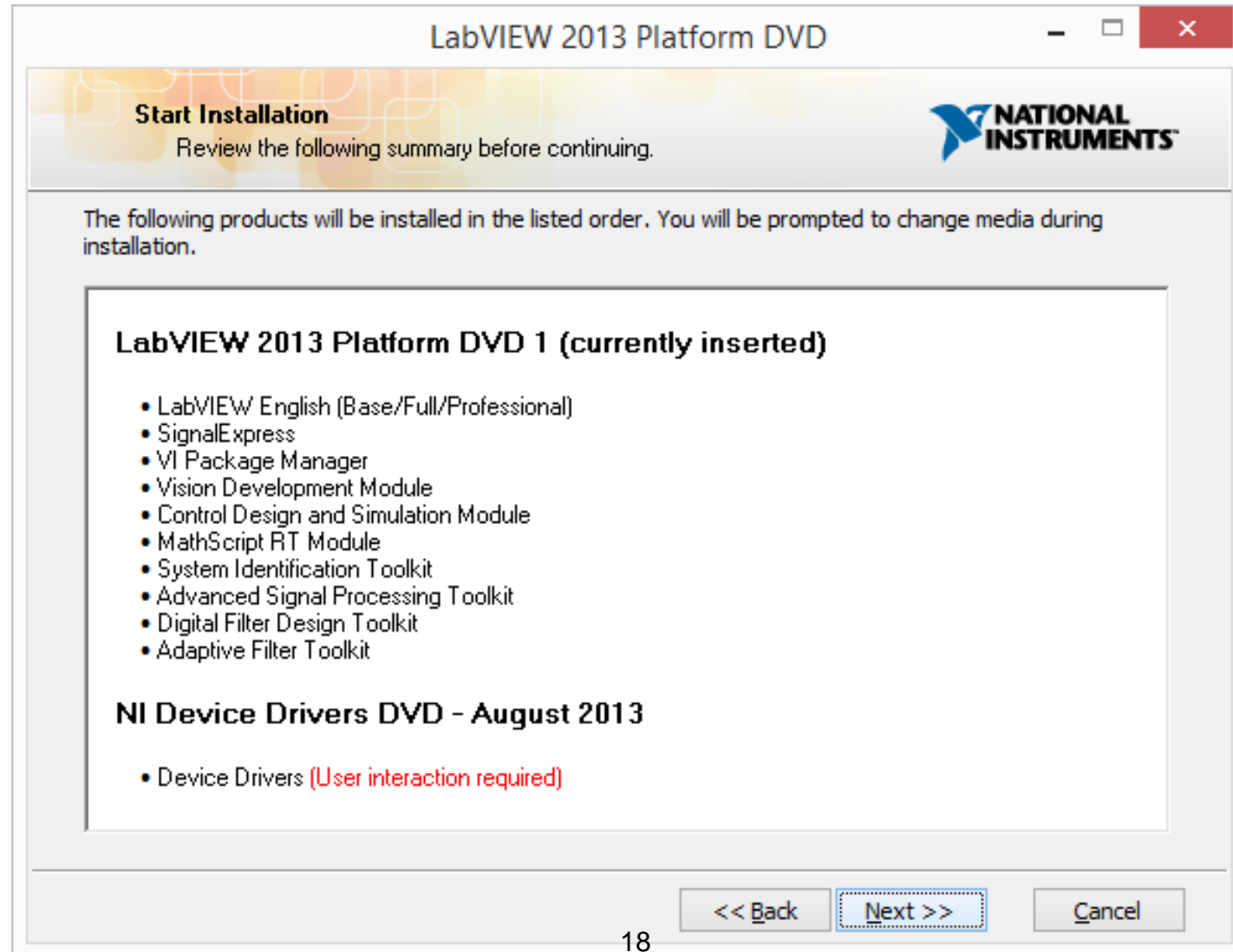


National Instruments software maintenance and support programs (included with most purchases of software) provide automatic updates, access to technical support, and exclusive access to online training modules.

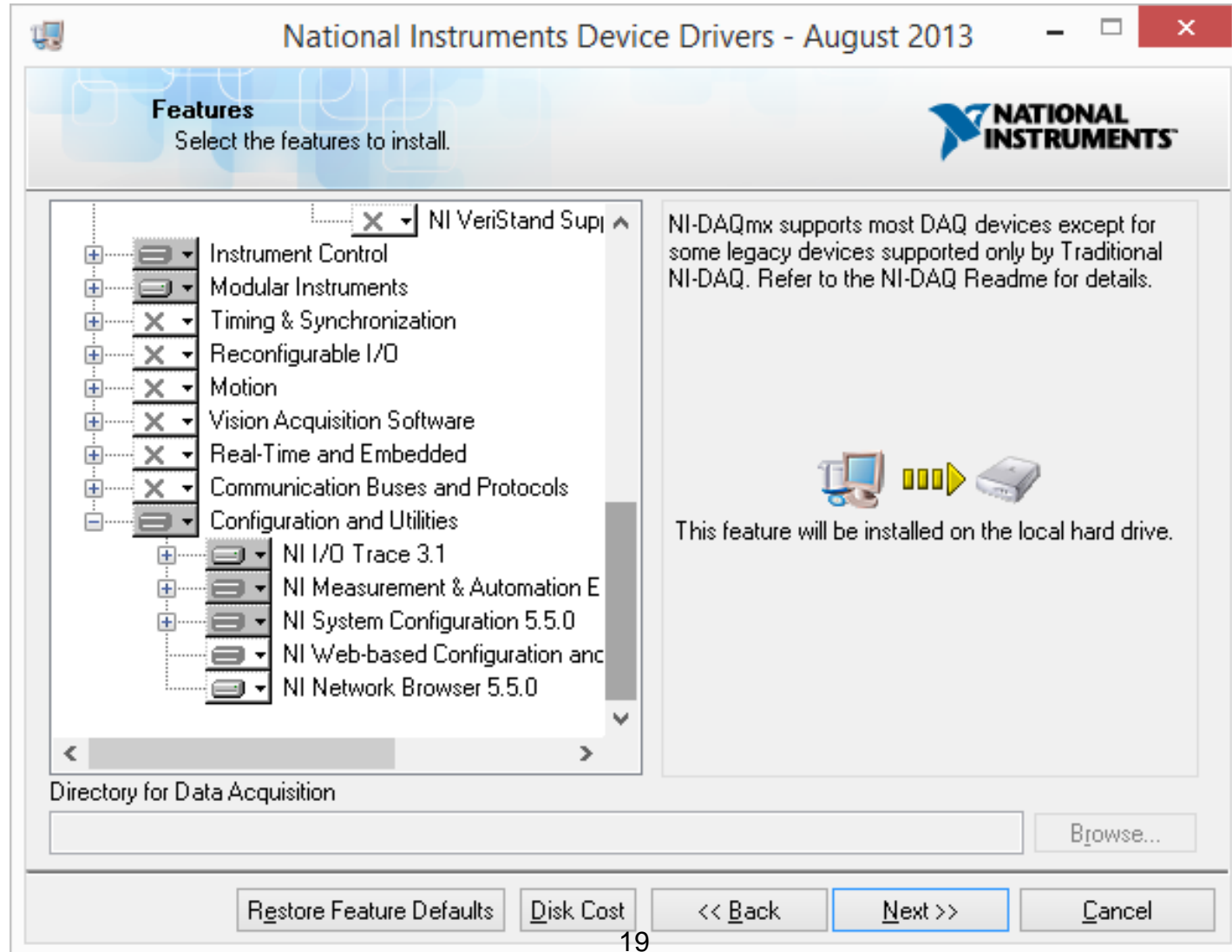
I am the end user of these products, and I want to associate my User Profile (marko@elfak.ni.ac.rs) with these service entitlements.

<< Back   Next >>   Cancel

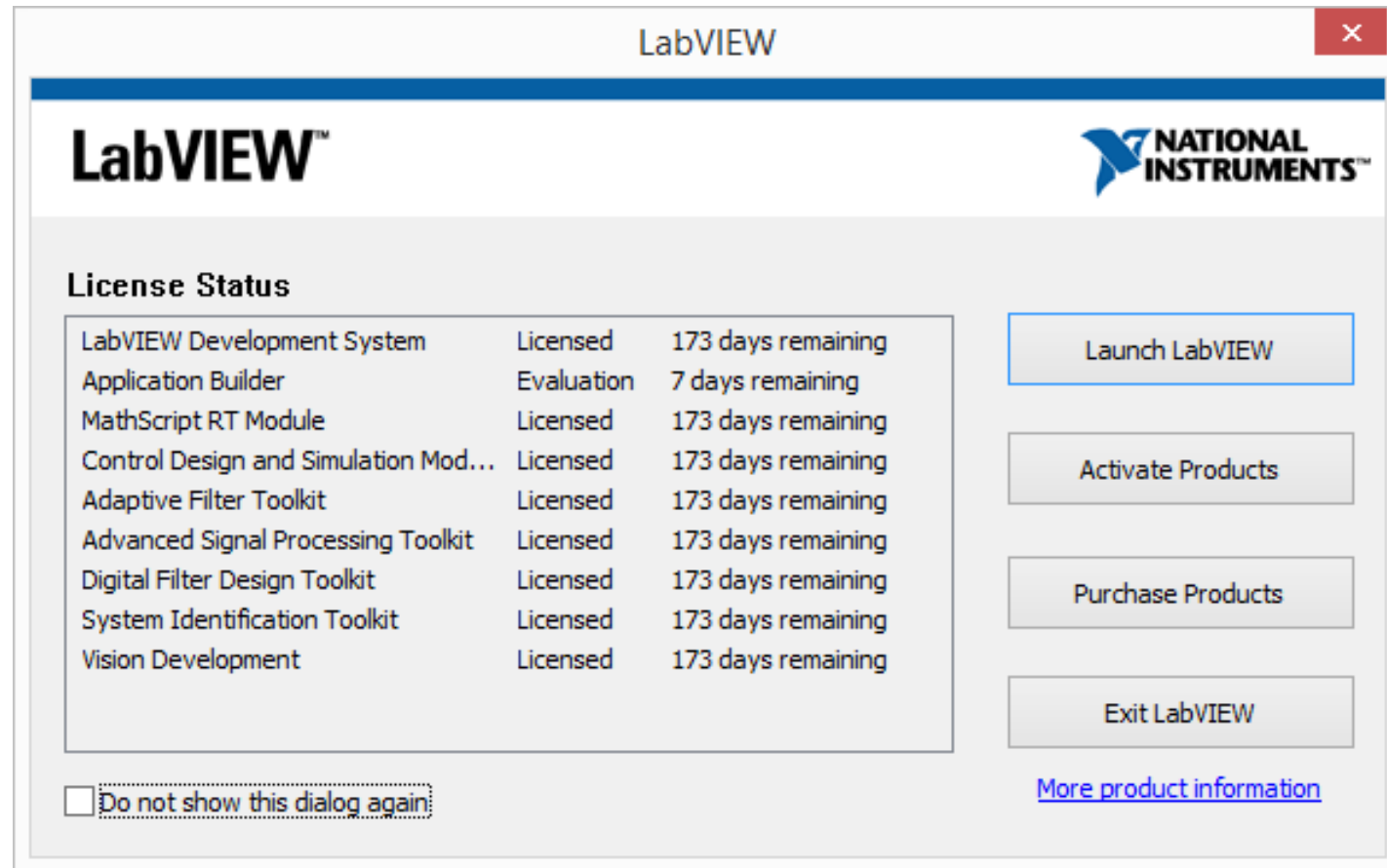
# Instalacija



# Instalacija drajvera



# Status licenci



The image shows a screenshot of the LabVIEW License Status dialog box. The window title is "LabVIEW" and it features the National Instruments logo. The "License Status" section contains a table with the following data:

| Product                              | Status     | Remaining Days     |
|--------------------------------------|------------|--------------------|
| LabVIEW Development System           | Licensed   | 173 days remaining |
| Application Builder                  | Evaluation | 7 days remaining   |
| MathScript RT Module                 | Licensed   | 173 days remaining |
| Control Design and Simulation Mod... | Licensed   | 173 days remaining |
| Adaptive Filter Toolkit              | Licensed   | 173 days remaining |
| Advanced Signal Processing Toolkit   | Licensed   | 173 days remaining |
| Digital Filter Design Toolkit        | Licensed   | 173 days remaining |
| System Identification Toolkit        | Licensed   | 173 days remaining |
| Vision Development                   | Licensed   | 173 days remaining |

Below the table, there is a checkbox labeled "Do not show this dialog again:" which is currently unchecked. To the right of the table, there are four buttons: "Launch LabVIEW", "Activate Products", "Purchase Products", and "Exit LabVIEW". At the bottom right, there is a blue hyperlink labeled "More product information".